



RS POWERTECH CONSULTING





About US

RS Powertech consulting company is basically an Engineering Design and Consulting company which is involved in Designing and Development of industrial Products and Special purpose machines like. Assembly automation, fire-fighting Solutions ,Solar Power installation , repair and Maintenance of industrial Gearboxes .we are also doing sales & services of industrial gearboxes & couplings .we are here to Serve the industrial and Manufacturing Sector by our Best Products and Services. We are working for the gearbox based Products and Applications Development for almost 13+ industrial Sectors. We are working on Pan-India Basis for supporting our customers in the Sense of our Products and Services.

We are supporting various Sectors like Steel, Cement, Sugar ,Paper ,Rubber ,mining and Material handling , Process industries , Pollution Control, etc.

Our Valuable Products

Industrial Geared Motors



Parallel Shaft Geared Motor



Inline helical Geared Motor



Bevel Helical Geared Motor

Helical Gearbox



Crane Duty Gearbox



Helical Gearbox



Pinion cum reduction Gearbox

Industrial/Planetary Gearbox



Foot mounted Planetary Gearbox



Torque arm mounted Planetary



Pinion stand Gearbox

Industrial Couplings



Geared Coupling



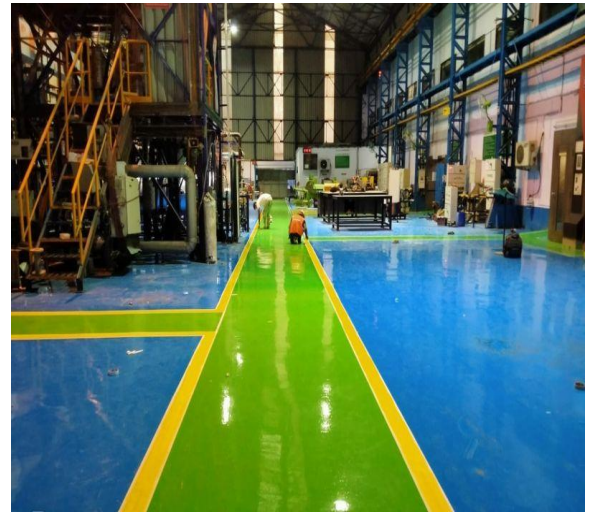
Fluid pulley coupling



Constant speed fluid coupling

Our Valuable Services

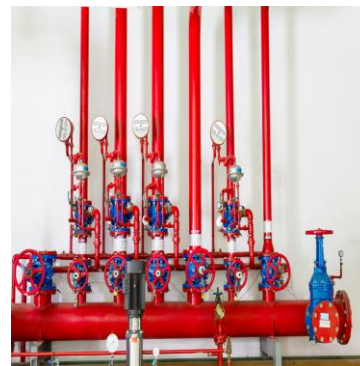
Flooring Solutions



HVAC Solutions



Fire Fighting Solutions



Test Rig Design & Development



Gearbox Test Rig Design & Development

Features of Test rig

- Heat & noise test
- Vibration test
- Leakage test
- Torque taking test
- Power Range Depend on Requirement

Gearbox Repair & Maintenance

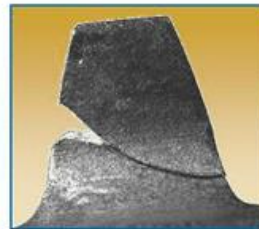
Pitting



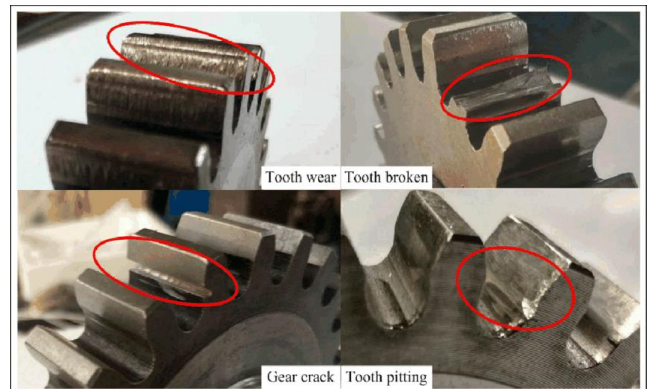
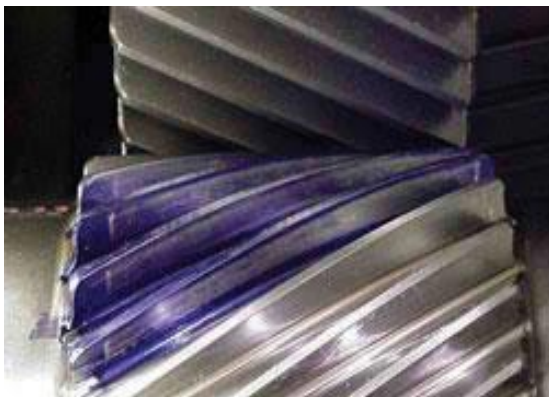
Micropitting



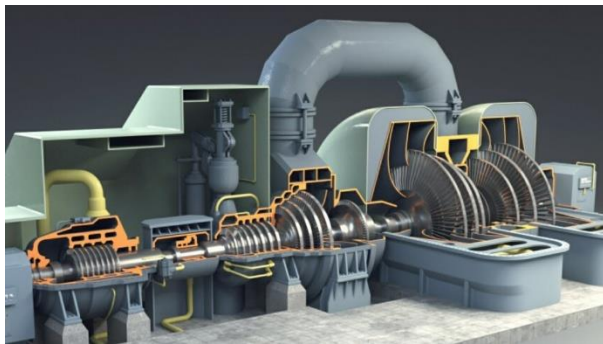
Flank fracture



Root breakage



Thermal Power Plant Repair & Maintenance

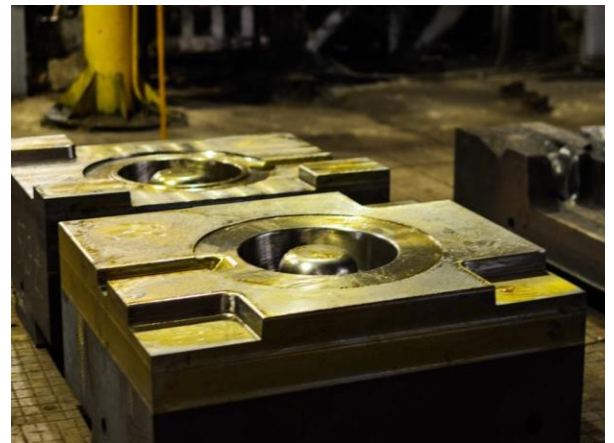
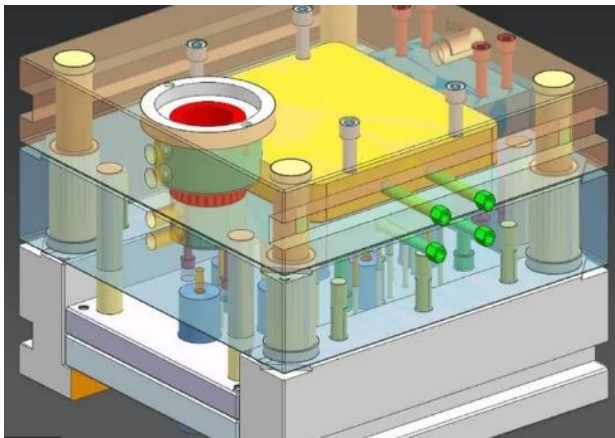


- **Annual Maintenance Contract for Thermal Power Plant up to 600MW**
- **Operation and Maintenance of 100MW Thermal Power Plants**

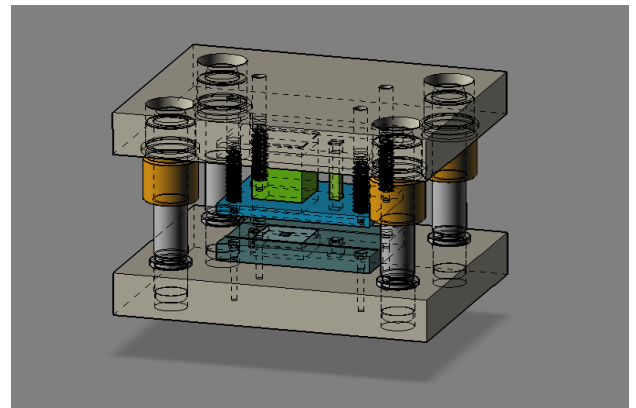
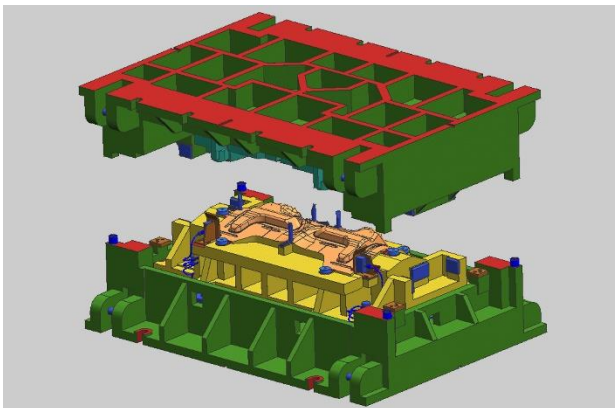


- **Annual Maintenance Contract for Thermal Power Plant up to 600MW**
- **Operation and Maintenance of 100MW Thermal Power Plants**
- **Instrumentation & Control of Whole Power Plant**
- **Spares Supply of Boiler, Turbine, Generator, Cooling Towers & Allied Equipment's which includes VRM, AHP, CHP, ETP, STP, WTP, & ESP**

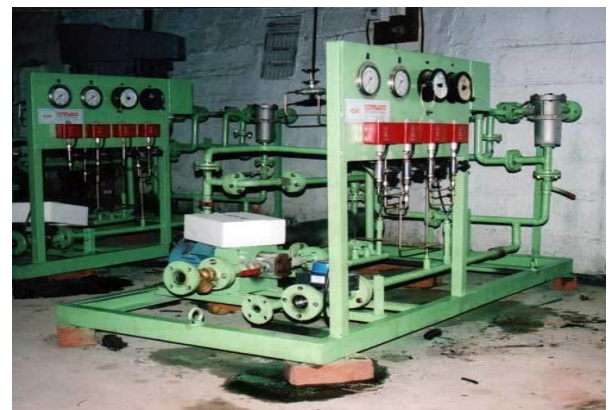
Casting Die Design for Metal & Plastic Components



Sheet Metal Die Design



Forced Lubrication System Design



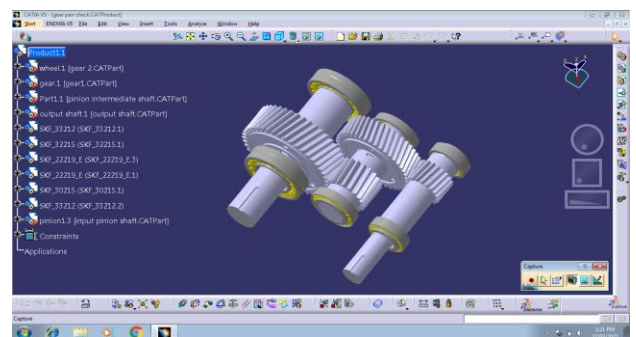
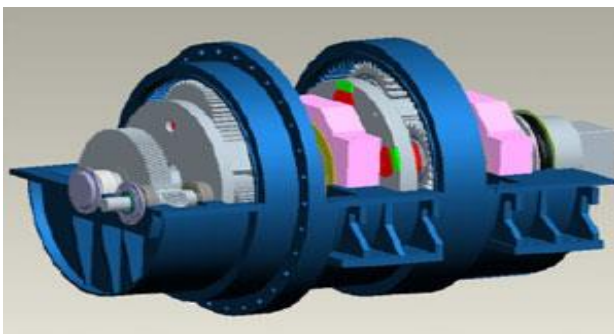
ETP , WTP & DM Plant Design



Solar Power module Design & Erection Commissioning

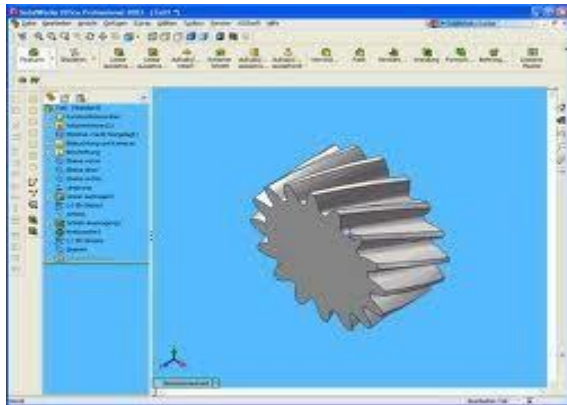
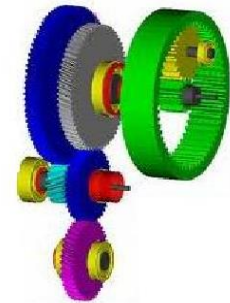
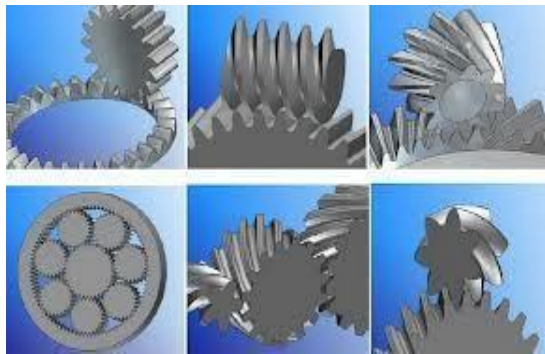


Industrial Gearbox Design & Development





OUR RESEARCH AND DEVELOPMENT FACILITY



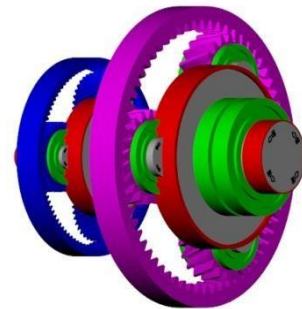
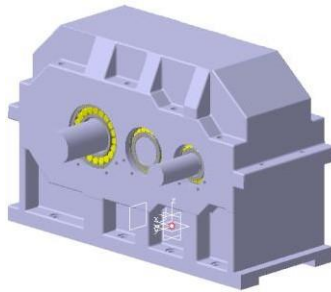
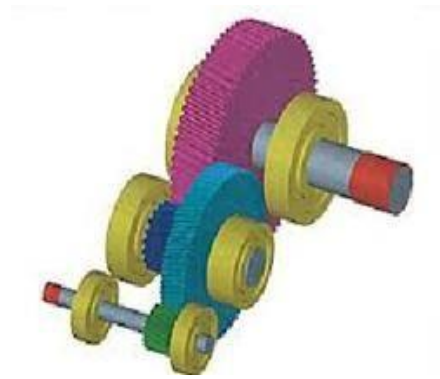
We are using latest 2-D & 3D design and analysis software's for designing the products

Our policy is to improve team work & team assessment more & more



OUR POLICIES

Engineering Legislative



Business Administrative



- Focusing on Latest Management Techniques
- Focusing on Product Performance
- On Time Delivery of Products & Services
- Focusing to delivery of Reliably Strong Products
- Commitment to deliver the services with Quality



Contact us



Head office: R S Powertech Consulting

Contact Person for Delhi Mr. Rahul Srivastava

House no C15, Street no 12, New Modern
Shahdara, Near DDA Flats Mansarovar Park
Shahdara Delhi -110032

Contact Number: 07678476141

Email: rspowertechconsulting@gmail.com

Website: www.rspowertech.in

Branch office Pune : R S Powertech Consulting

Contact Person for Pune Mr. Rohan Solanki

808, Shraddha Residency
Udyog Nagar, Chinchwad
Pune 411033

Email : rohants105@gmail.com